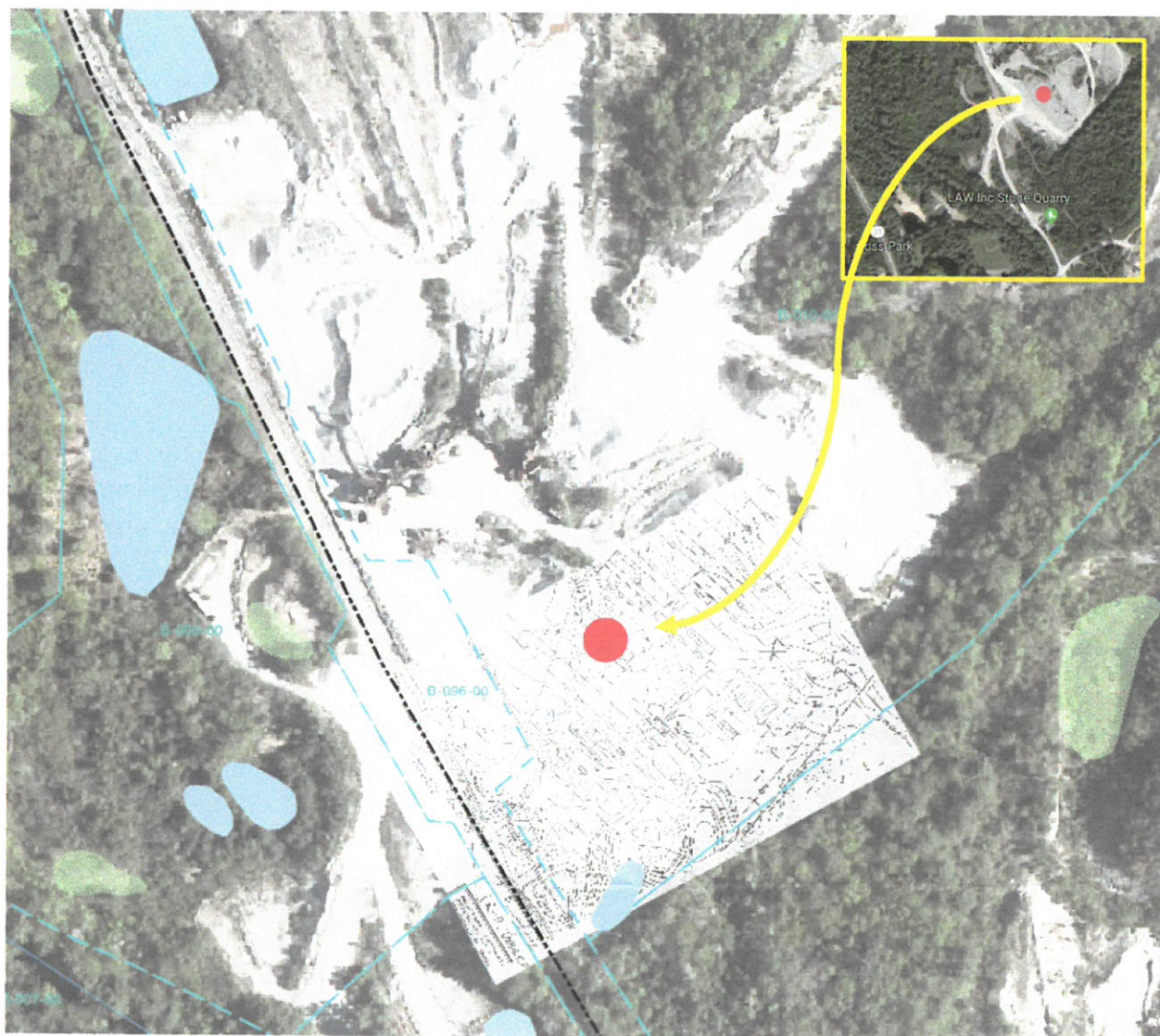


Dear members of the Zoning Board,

October 13th, 2019

I am writing in opposition of the Quinn Brother's plan to build an asphalt plant in Wilton. I am opposed to the construction of this plant for several reasons:

1. The overhead view below locates the proposed plant on a satellite photo view of the area, using the diagram from the Quinn's proposed plans. The red dot is the location of the proposed plant. Note that the proposed plant is in immediate proximity to several bodies of water.



2. Plants producing asphalt can release toxic chemicals into the air, ground, and water. These include pollutants such as arsenic, benzene, formaldehyde, cadmium, polycyclic aromatic hydrocarbons, condensed particulates, carbon monoxide, sulfur dioxides, nitrogen oxides, and phenol.

The contours on the map of the stratified drift aquifer on the next page indicate that any of these chemicals, if accidentally released, or released in any amount on a regular basis, will eventually leach into the aquifer, and enter our river system.

RECEIVED

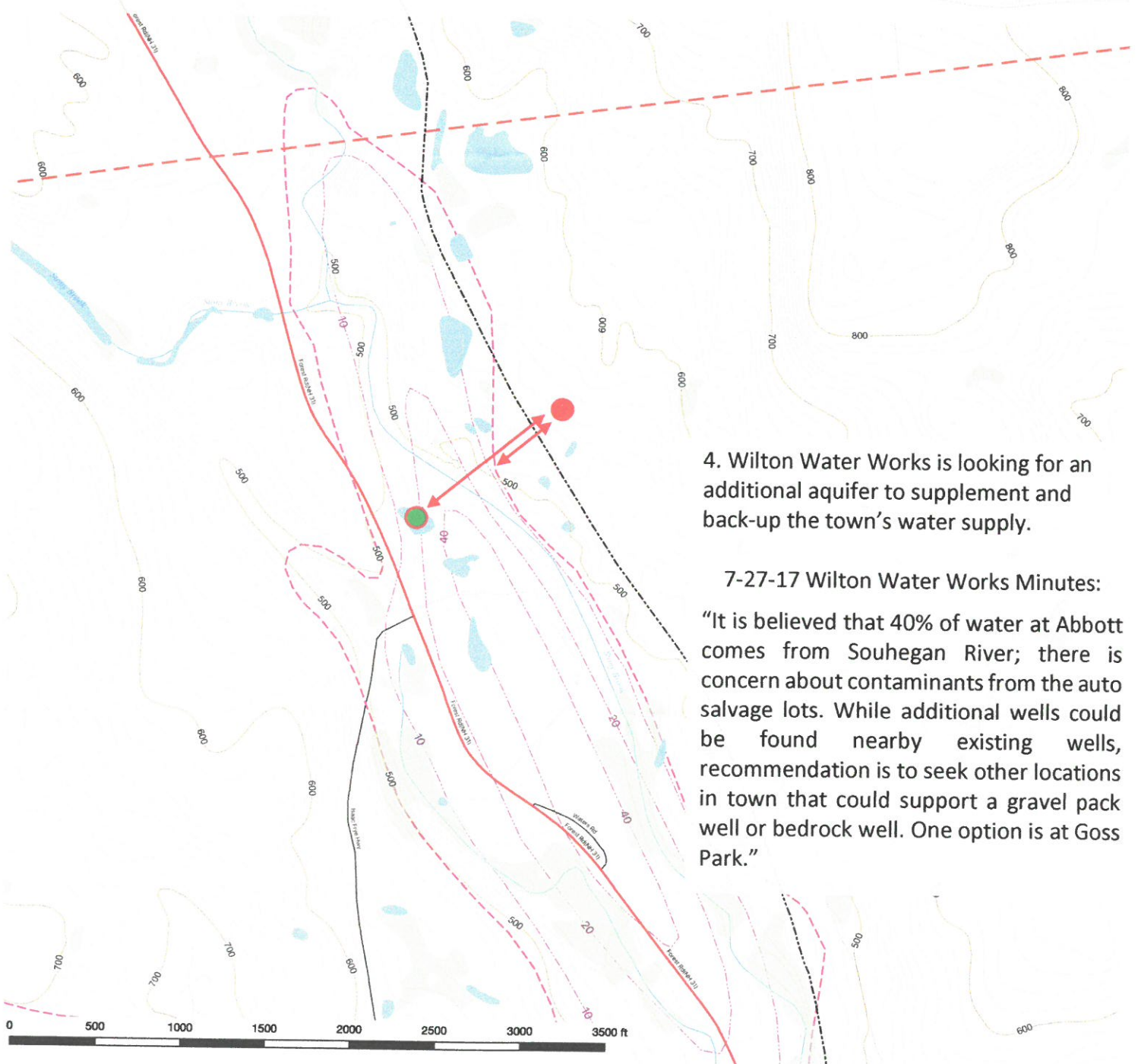
OCT 17 2019

TOWN OF WILTON, NH

3. Below is a map of the stratified drift aquifer with the proposed plant's approximate location marked with a red dot. Note the close proximity to Goss Park, marked w/ a red-outlined, green dot, and proximity to the aquifer.

Stony Brook is a 10-mile-long river, tributary of the Souhegan River. The Souhegan flows about 21 miles before entering the Merrimack River, which flows about 55 miles to the Gulf of Maine.

Any accidental spill, or regular release of toxic chemicals, will potentially impact approximately 80 miles of downstream NH homeowners, municipalities, natural resources and wildlife.



4. Wilton Water Works is looking for an additional aquifer to supplement and back-up the town's water supply.

7-27-17 Wilton Water Works Minutes:

"It is believed that 40% of water at Abbott comes from Souhegan River; there is concern about contaminants from the auto salvage lots. While additional wells could be found nearby existing wells, recommendation is to seek other locations in town that could support a gravel pack well or bedrock well. One option is at Goss Park."

Quarry at 50 Quinn Drive, Wilton, NH
 DOT 2018 transport, NHDFlowline, NWIPlusNH wetlands; 5' contours
 Magenta lines: heavy - - = stratified drift aquifer; light - - - = contours of saturated thickness (water table to bottom)
 (source: USGS, March 2000, as GRANIT files aqunr.e00, satnr.e00)

Map projection: EPSG:3614, NAD83(NSRS2007) / New Hampshire (ftUS); GPS Grid: EPSG:4326 WGS84

5. In 2018, Wilton residents updated the town's Master Plan. Under the Economic Development Vision section, it reads: "Wilton will encourage growth that supports broad community objectives including those in retail, agriculture, education, and hospitality, and projects that preserve historic structures or foster the arts."

An Asphalt Plant does not align with the Master Plan's vision.

I am one of many residents that fails to see a positive connection between an asphalt plant and supporting "retail, agriculture, education, and hospitality, and projects that preserve historic structures or foster the arts."

6. Finally, consider that the EPA sets a 2-mile zone for the spread of fumes from asphalt plants. TWO schools fall within the two mile limit: Central School in Lyndeborough, and the Wilton-Lyndeborough Cooperative School. Combined, there are more than a dozen businesses, recreation facilities, and Government Offices within the 2-mile zone.

Does it seem a particularly good idea to have and families with children swimming at Goss Park, within 1000 feet of a plant emitting chemicals from an EPA toxic list? NH already has the highest rate of pediatric cancer in the United States.

For the sake of our town, our residents, our children, downstream municipalities, homeowners, and our environment, I urge you to withhold approval on the application to build the asphalt plant.

Thank you for your time and attention,

Chris Balch
Wilton

