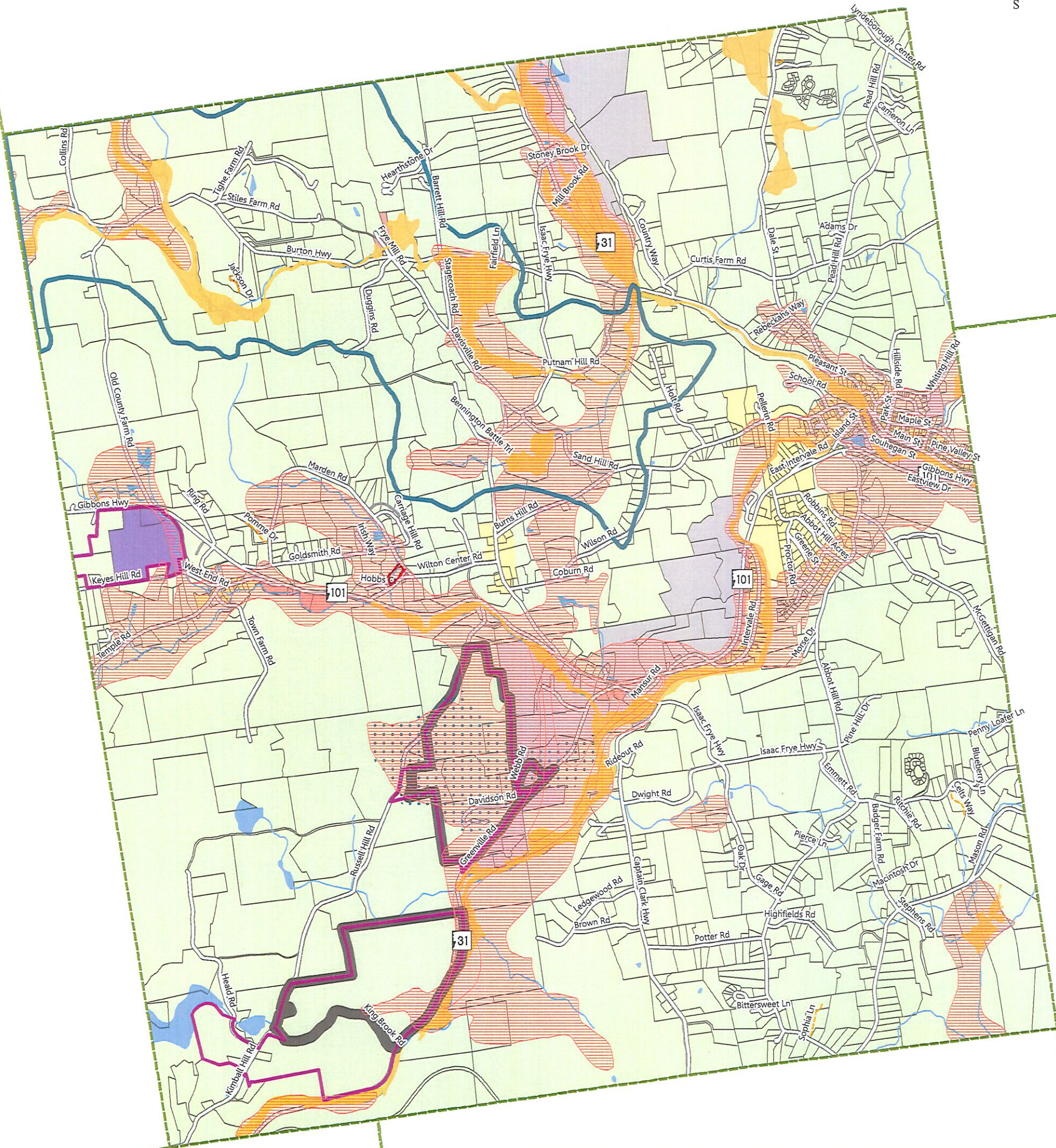


Current Zoning



Zoning

- | | |
|--------------------------------|------------|
| Residential | Lot Lines |
| Residence-Agriculture | Open Water |
| Commercial | Streams |
| Industrial | |
| Office Park | |
| Aquifer Protection Overlay | |
| Wellhead Protection Overlay | |
| Watershed Protection District | |
| Gravel Overlay District | |
| Research & Office Park Overlay | |
| Special Flood Hazard Areas | |

0 0.25 0.5 0.75 1 Miles

RESIDENTIAL

464 acres (2.82% of total area)

- a. Single family and duplex family dwellings and accessory uses
- b. Multi-family dwellings containing three dwelling units with site plan approval by Planning Board

RESIDENCE-AGRICULTURE

14,984 acres (90.97% of total area)

- a. Single family and duplex family dwellings and accessory uses
- b. Multi-family dwellings containing three dwelling units with site plan approval by Planning Board
- c. All general farming and forestry activities.

COMMERCIAL

62 acres (0.38% of total area)

- a. Single family and duplex family dwellings and accessory uses
- b. Multi-family dwellings containing three dwelling units with site plan approval by Planning Board
- c. Duplex and multi-family dwellings, inns, tourist courts, cabins and bed and breakfasts
- d. Restaurants and other retail establishment
- e. Garages, parking lots and filling stations
- f. Business and professional offices
- g. Theaters, halls, clubs, and amusement centers
- h. Greenhouses and florist shops

INDUSTRIAL

886 acres (5.38% of total area)

- a. Restaurants and other retail establishment
- b. Garages, parking lots and filling stations
- c. Business and professional offices
- d. Theaters, halls, clubs, and amusement centers
- e. Greenhouses and florist shops
- f. Funeral homes
- g. Wholesale establishments in connection with permitted retail establishments
- h. Manufacturing, compounding, processing, packing, treatment, or warehousing of goods and products
- i. Research and/or testing laboratory
- j. Offices

OFFICE PARK

75 acres (0.45% of total area)

- a. Corporate offices
- b. Research facilities
- c. Farming uses